



Features

- XP-8x49-CE6: LX800, 500 MHz CPU
 XP-8x49-Atom-CE6: Atom Z510, 1.1 GHz CPU
- Pre-installed InduSoft Web Studio Runtime
- Windows CE 6.0 R3 Core
- Hard Real-Time Capability
- VGA Port Output
- Modbus RTU/TCP (Master, Slave)
- Support eLogger or Soft-GRAF HMI
- Redundant Power Inputs
- Operating Temperature: -25 ~ +75°C



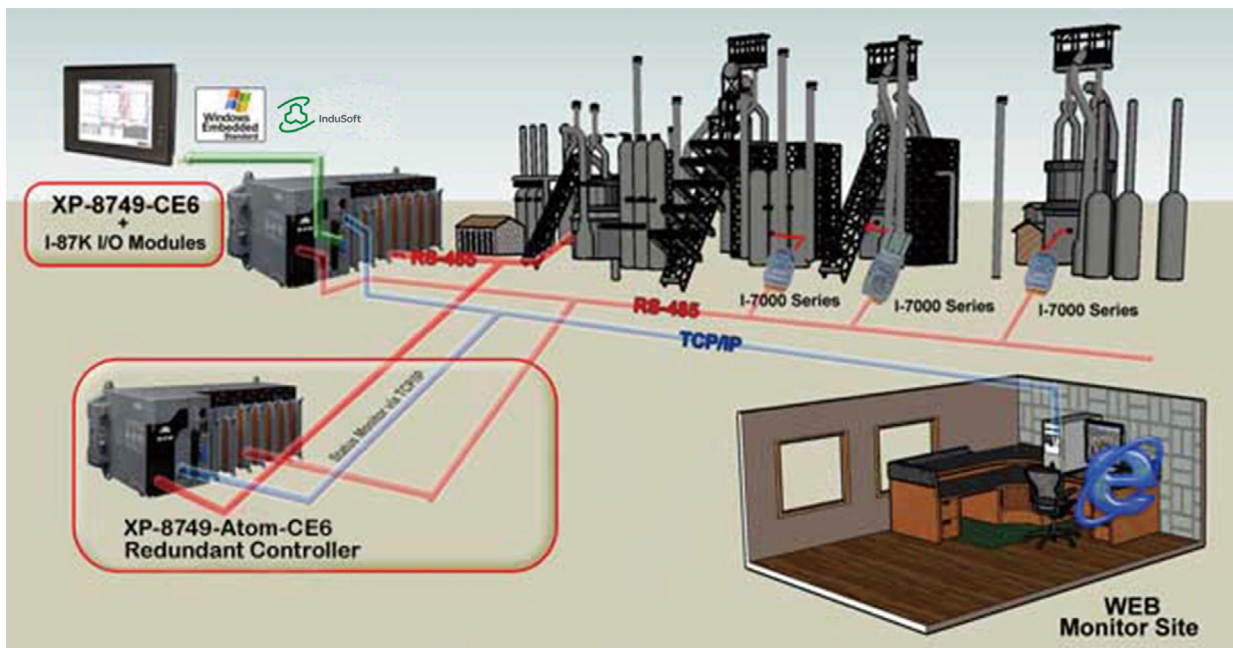
Introduction

XP-8x49-CE6/XP-8x49-Atom-CE6 Series is the new generation Windows CE 6.0 based PAC (Programmable Automation Controller) of ICP DAS. It features with the **powerful InduSoft Web Studio**. **XP-8000-CE6** Series is equipped with an AMD LX800 CPU (500 MHz), various connectivity (VGA, USB, Ethernet, RS-232/485) and 0/3/7 I/O slots for high performance parallel I/O modules (high proT le I-8K Series) and serial I/O modules (high proT le I-87K series). **XP-8000-Atom-CE6** series equips a Intel Atom Z500 Series, variant connectivity (VGA, USB, Ethernet, RS-232/RS-485), and 1/3/7 slots for high performance parallel I/O modules (high profile I-8K series) and serial-type I/O modules (high profile I-87K I/O modules).

The benefits of running Windows CE 6.0 on XPAC include hard real-time capability, small core size, fast boot speed, interrupt handling at a deeper level and achievable deterministic control. XPAC is also capable of running PC-based control software such as Visual Basic .NET, Visual C#,.... etc. It has all of the best features of both traditional PLCs and Windows capable PCs.

Applications

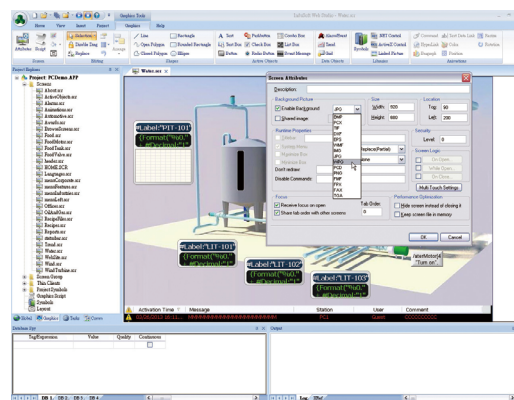
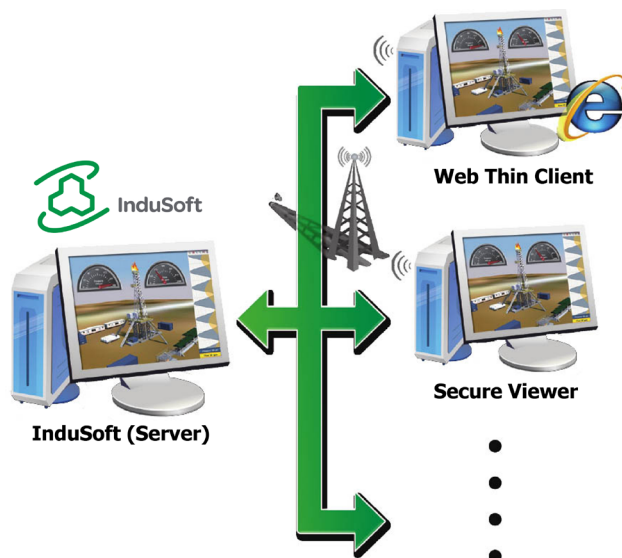
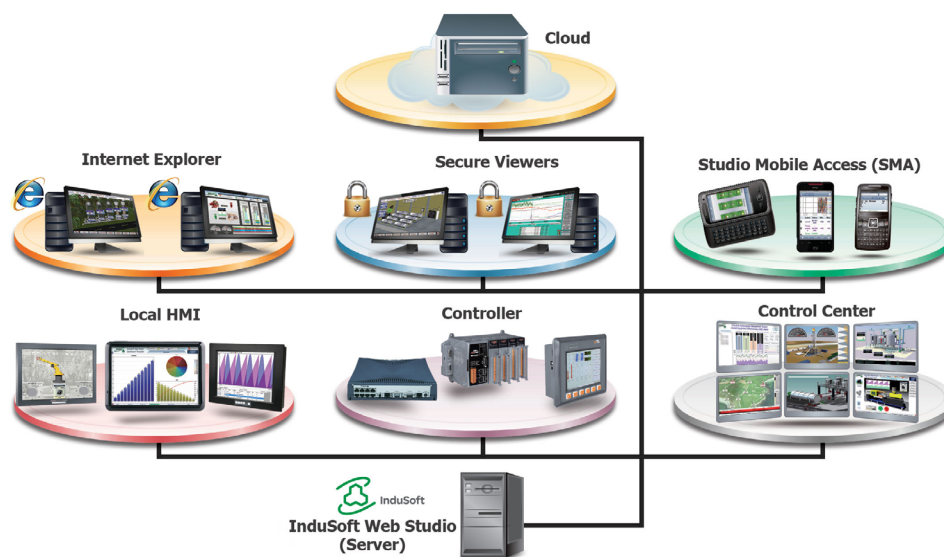
Environment monitoring, factory automation, building management system, industrial machine control, etc.



InduSoft Features

IWS applications run on microcomputers connected in real-time to machines or processors through WinPAC programmable controllers, remote I/O devices, and other data acquisition equipment. These applications consist of animated operator-interface screens, rollable I/O devices, an application tags database, and optional modules such as alarm monitors, trend charts, recipes, schedulers, and a security system.

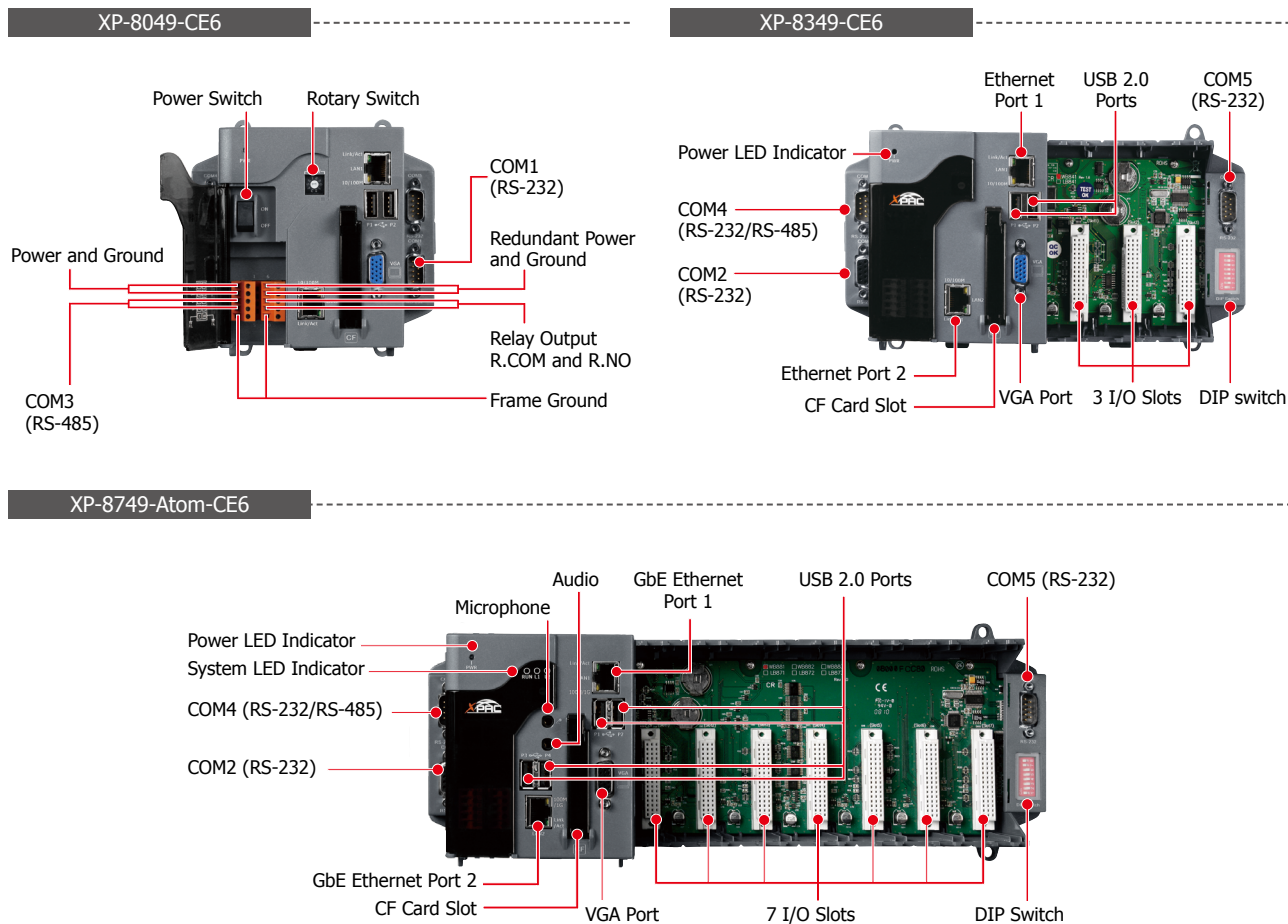
- Intuitive script language with more than 100 standard functions is provided.
- Conform to industry standards such as Microsoft.NET, OPC, DDE, ODBC, XML.
- Full-Featured WinCE-based run-time environment (CE View).
- Dynamic library of symbols - customizable.
- ActiveX container (Windows NT/CE).
- Automatic e-mail (SMTP) and dial-up connection interface supported.
- Provide multi-level security for applications, including the Internet and Intranet.



Specifications

Models	XP-8049-CE6	XP-8349-CE6	XP-8749-CE6	XP-8149-Atom-CE6	XP-8349-Atom-CE6	XP-8749-Atom-CE6
System Software						
OS	Windows CE 6.0 R3 Core					
.Net Compact Framework	3.5					
Embedded Service	FTP Server, ASP (Java Script, VB Script), SQL Compact Edition 3.5					
SDK Provided	DII for Visual Studio .Net 2005/2008					
Multilanguage Support	English, German, French, Spanish, Russian, Italian, Czech, Japanese, Korean, Simplified Chinese, Traditional Chinese					
Development Software						
InduSoft Software	InduSoft Web Studio Runtime					
Others	Options: Microsoft EVC++4.0 or VS.NET 2003/2005/2008 (VB.NET 2003/2005/2008, C#.NET 2003/2005/2008)					
CPU Module						
CPU	AMD LX800, 500 MHz			Atom Z510, 1.1 GHz		
System Memory	512 MB DDR SDRAM					
Dual Battery Backup SRAM	512 KB; data valid for up to 5 years (for retaining variables)					
Flash	4 GB			8 GB		
EEPROM	16 KB					
CF Card	Yes, support up to 32 GB					
RTC (Real Time Clock)	Display seconds, minutes, hours, date, day of the week, month, year					
Programmable LED Indicator	-			2		
64-bit Hardware Serial Number	Yes, for Software Copy Protection					
Dual Watchdog Timers	Yes					
Rotary Switch	Yes (0 ~ 9)					
DIP Switch	-			Yes (8 bits)		
Audio	-			Microphone-In and Earphone-Out		
VGA & Communication Ports						
VGA	Yes (resolution: 1024 x 768, 800 x 600, 640 x 480)			Yes (resolution: 1400 x 1050, 1024 x 768, 800 x 600, 640 x 480)		
Ethernet	RJ-45 x 2, 10/100 Base-TX (Auto-negotiating, Auto MDI/MDI-X, LED indicators).					
USB 2.0	2			4		
COM 1	RS-232 (RxD, TxD and GND); non-isolated	Internal communication with the high profile I-87K series modules in slots				
COM 2	RS-232 (RxD, TxD and GND); non-isolated					
COM 3	RS-485 (Data+, Data-) with internal self-tuner ASIC; 3000 VDC isolated					
COM 4	RS-232/RS-485 (RxD, TxD, CTS, RTS and GND for RS-232, Data+ and Data- for RS-485); non-isolated					
COM 5	RS-232 (RxD, TxD, CTS, RTS, DSR, DTR, CD, RI and GND); non-isolated					
I/O Expansion Slots						
Number of Slots	0	3	7	1	3	7
	Note: For High Profile I-8K and I-87K Modules Only					
Mechanical						
Dimensions (W x L x H)	137 x 132 x 125 (mm)	231 x 132 x 125 (mm)	355 x 132 x 125 (mm)	169 x 132 x 125 (mm)	231 x 132 x 125 (mm)	355 x 132 x 125 (mm)
Installation	DIN-Rail or Wall Mounting					
Environmental						
Operating Temperature	-25 ~ +75°C					
Storage Temperature	-30 ~ +80°C					
Ambient Relative Humidity	10 ~ 90% RH (non-condensing)					
Power						
Input Range	+10 ~ +30 VDC					
Isolation	1 kV					
Redundant Power Inputs	Yes, with one power relay (1 A @ 24 VDC) for alarm					
Capacity	15 W	35 W	35 W	25 W	35 W	35 W
Consumption	14.4 W	14.4 W	16.8 W	16.6 W	16.8 W	18 W

Appearance



InduSoft Based XPAC

Ordering Information

InduSoft Default Runtime License: 300 Tags, 3 Drivers	
XP-8049-CE6 CR	0 I/O slot InduSoft Based XPAC with WinCE 6.0 (OS: Multi-Language version) (RoHS)
XP-8349-CE6 CR	3 I/O slots InduSoft Based XPAC with WinCE 6.0 (OS: Multi-Language version) (RoHS)
XP-8749-CE6 CR	7 I/O slots InduSoft Based XPAC with WinCE 6.0 (OS: Multi-Language version) (RoHS)
XP-8149-Atom-CE6 CR	1 I/O slot InduSoft Based XPAC with WinCE 6.0 (OS: Multi-Language version) (RoHS)
XP-8349-Atom-CE6 CR	3 I/O slots InduSoft Based XPAC with WinCE 6.0 (OS: Multi-Language version) (RoHS)
XP-8746-Atom-CE6 CR	7 I/O slots InduSoft Based XPAC with WinCE 6.0 (OS: Multi-Language version) (RoHS)
InduSoft Default Runtime License: 1500 Tags, 3 Drivers	
XP-8049-CE6-1500 CR	0 I/O slot InduSoft Based XPAC with WinCE 6.0 (OS: Multi-Language version) (RoHS)
XP-8349-CE6-1500 CR	3 I/O slots InduSoft Based XPAC with WinCE 6.0 (OS: Multi-Language version) (RoHS)
XP-8749-CE6-1500 CR	7 I/O slots InduSoft Based XPAC with WinCE 6.0 (OS: Multi-Language version) (RoHS)
XP-8149-Atom-CE6-1500 CR	1 I/O slot InduSoft Based XPAC with WinCE 6.0 (OS: Multi-Language version) (RoHS)
XP-8349-Atom-CE6-1500 CR	3 I/O slots InduSoft Based XPAC with WinCE 6.0 (OS: Multi-Language version) (RoHS)
XP-8749-Atom-CE6-1500 CR	7 I/O slots InduSoft Based XPAC with WinCE 6.0 (OS: Multi-Language version) (RoHS)

Accessories

Accessories	
DP-660	24 VDC/2.5 A, 60 W and 5 VDC/0.5 A, 2.5 W Power Supply with DIN-Rail Mounting
DP-1200	24 VDC/5.0 A, 120 W Power Supply with DIN-Rail Mounting
MDR-60-24	24 VDC/2.5 A, 60 W Power Supply with DIN-Rail Mounting
NS-205 / NS-208	5-port/8-port Unmanaged Industrial 10/100 Ethernet Switch with Plastic Case