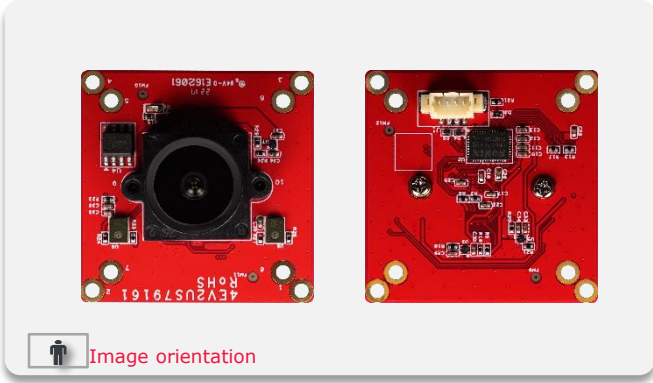




EV2U-SGR1 USB2.0 Fixed Focus Camera Module

Preliminary

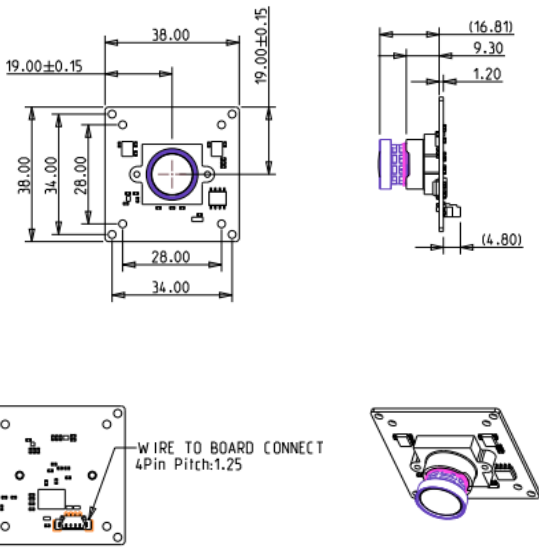


Features

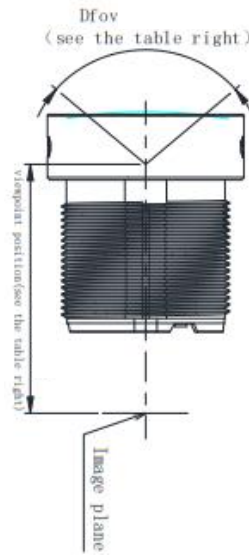
- 1920x1080@30fps
- Lens D/H/V FOV:121°/102°/54°
- Low light condition
- OS Support: Windows, Linux, Android, MacOS (UVC)
- Compliant to USB2.0 and USB Video Class
- Complies with CE/FCC Class A

Mechanical Drawing

Mechanical Drawing



Lens Specification



Items	Specification
F No.	1.6 ± 10%
Focal Length	3.28 ± 5%
Optical Back Focal Length	6.83 ± 0.2mm (in air)
Mechanical Back Focal Length	6 ± 0.2mm (in air)
TTL	22.27 ± 0.2mm (in air)
Image Circle	Φ7 (MAX)
Lens Structure	2G4P
Mount	M12*P0.5
DFOV	121°

Headquarters (Taiwan)

5F., No. 237, Sec. 1, Datong Rd., Xizhi Dist., New Taipei City 221, Taiwan
 Tel: +886-2-7703-3000
 Email: sales@innodisk.com

Branch Offices:

USA
usasales@innodisk.com
 +1-510-770-9421

Europe
eusales@innodisk.com
 +31-40-3045-400

Japan
jpsales@innodisk.com
 +81-3-6667-0161

China
sales_cn@innodisk.com
 +86-755-2167-3689

www.innodisk.com

© 2019 Innodisk Corporation. All right reserved. Specifications are subject to change without prior notice.

December 2, 2022

Specifications

Resolution	1920x1080 @ 30fps
Output I/F	USB2.0
Power consumption	Approximate 1W
Dimension (WxLxH)	38 x 38 x 16.8 mm
Operating Temp.	-20°C ~ +70°C
Sensor Size	1/2.9"
Pixel Size	2.8um
Lens type	Fixed focus (M12)
Lens D/H/V FOV	121°/102°/54°
OS Support	Windows, Linux, Android, MacOS

Order information

EV2U-SGR1-MMC1-C1
 USB2.0 Fixed Focus Camera Module
7W2000000150
 USB2.0 cable 1 meter, 4 pins, pitch 1.25mm

Cable appearance



www.innodisk.com