



FARO-HP/FP CAN Bus mPCIe Card

Features

- Full or Half PCI Express Mini Card
- Compliant with CAN 2.0 A/B Specification
- 2-Channel Individual CAN and J1708 Interfaces
- CAN bus Baud Rate Setting: 125/250/500/800/1000Kbps
- Vehicle Communication Protocols: OBD-II, J1939 and J1708
- Built-in Programmable CAN Identifier Filtering
- Sensor Integrated: 3D Gyroscope, 3D Accelerometer
- Support Linux SocketCAN Driver



Introduction

ANTZER TECH's FARO Series can optionally support protocols from RAW CAN 2.0 a/ b, OBDII, J1939 to J1708. With FARO's SDK, your system is allowed to get Car, Truck, Bus, Crane, Harvester & other commercial vehicle information easily.

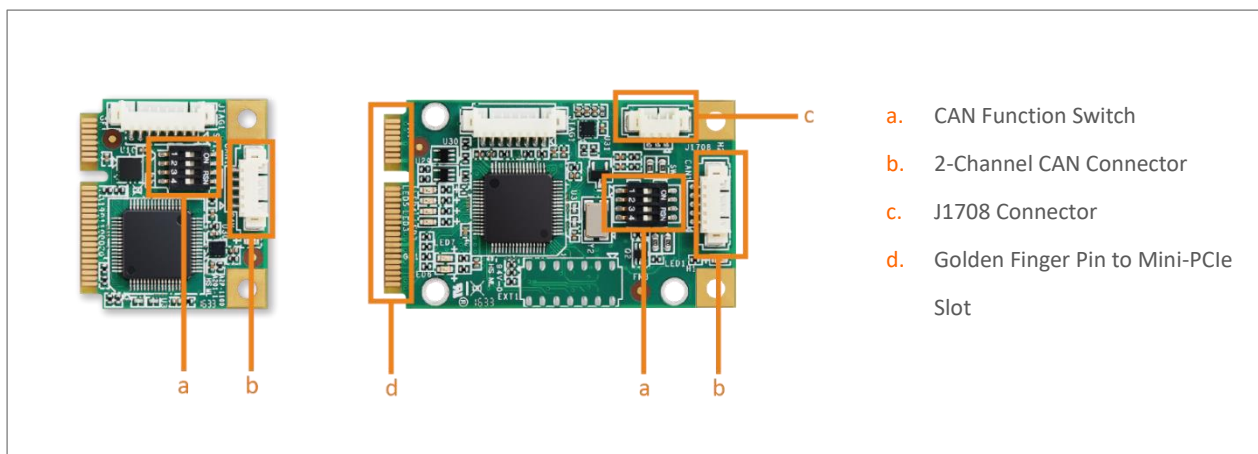
Other powerful advantages as independent dual CAN bus, Gyroscope/ Accelerometer on-board make FARO the ideal solution for the Fleet Management, Public Transit, Law Enforcement, Digital Signage Player, Vehicle Data Collection, Vehicle Tracking, Telematics System, and etc.

Specifications

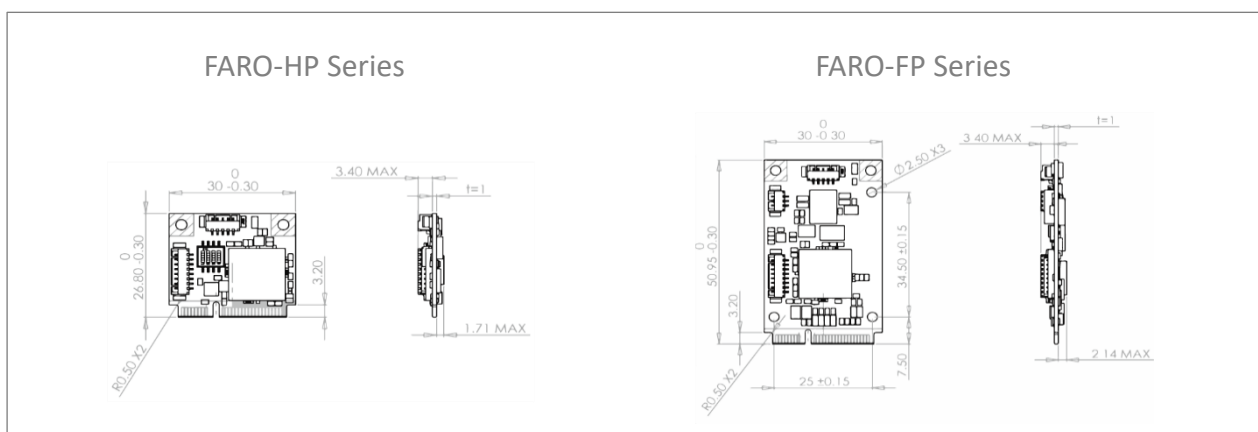
| | |
|--------------------------------|---|
| Form Factor | Full or Half PCI Express Mini Card |
| Host Interface | USB 2.0 via PCI Express Mini Card Socket |
| Interface Number | CAN (ISO 11898) x 2 Individual Channels J1708 x 1 (FARO-FP900 Only) |
| Sensor | 3D Gyroscope 3D Accelerometer 3D Magnetometer |
| Protocol | OBD-II, J1939 and J1708 |
| Identifier filtering | Mask and Identifier List Mode |
| Driver Support | Microsoft Windows 7 / 8 / 8.1 / 10 Linux Ubuntu 16.04 LTS, Kernel 4.4 and Later SocketCAN (Source Code) |
| SDK Support | Microsoft Windows 7 / 8 / 8.1 / 10 Linux Ubuntu 16.04 LTS, Kernel 4.4 and Later |
| Operation Temp. | -40°C ~ 85°C |
| Vibration Test | Pass 7.69G@ 20~2000Hz, compliant with MIL-STD-810G category 24 |
| ESD Protection | 8kV Contact, 15kV air |
| Certificate | CE/FCC |
| Dimension (L x W x H) | Full PCI Express Mini Card: 50.9 x 30 x 6.56mm Half PCI Express Mini Card: 26.8 x 30 x 6.56mm |



I/O Connectors



Dimensions





Pin Assignment

| Pin | Function | Pin | Function |
|----------------|----------|-----|----------|
| 1 | NC | 2 | +V3.3 |
| 3 | NC | 4 | GND |
| 5 | NC | 6 | NC |
| 7 | NC | 8 | NC |
| 9 | GND | 10 | NC |
| 11 | NC | 12 | NC |
| 13 | NC | 14 | NC |
| 15 | GND | 16 | NC |
| Mechanical Key | | | |
| 17 | NC | 18 | GND |
| 19 | NC | 20 | NC |
| 21 | GND | 22 | NC |
| 23 | NC | 24 | +V3.3 |
| 25 | NC | 26 | GND |
| 27 | GND | 28 | NC |
| 29 | GND | 30 | NC |
| 31 | NC | 32 | NC |
| 33 | NC | 34 | GND |
| 35 | GND | 36 | USB_DM |
| 37 | GND | 38 | USB_DP |
| 39 | +V3.3 | 40 | GND |
| 41 | +V3.3 | 42 | NC |
| 43 | GND | 44 | NC |
| 45 | NC | 46 | NC |
| 47 | NC | 48 | NC |
| 49 | NC | 50 | GND |
| 51 | NC | 52 | +V3.3 |

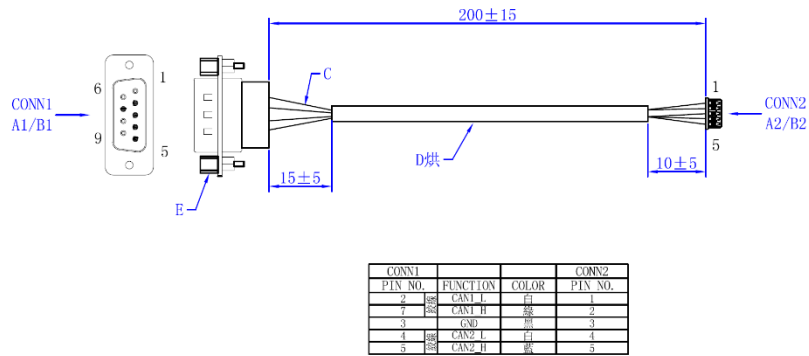
Ordering Information

| Part Number | Description |
|-------------|--|
| FARO-HP100 | Half Mini PCIE(USB), 2 channels CAN 2.0 A/B, Gyroscope, Accelerometer |
| FARO-HP700 | Half Mini PCIE(USB), 2 channels CAN 2.0 A/B, OBDII, J1939, Gyroscope, Accelerometer |
| FARO-FP900 | Full Mini PCIE(USB), 2 channels CAN 2.0 A/B, OBDII, J1939, J1708, Gyroscope, Accelerometer |

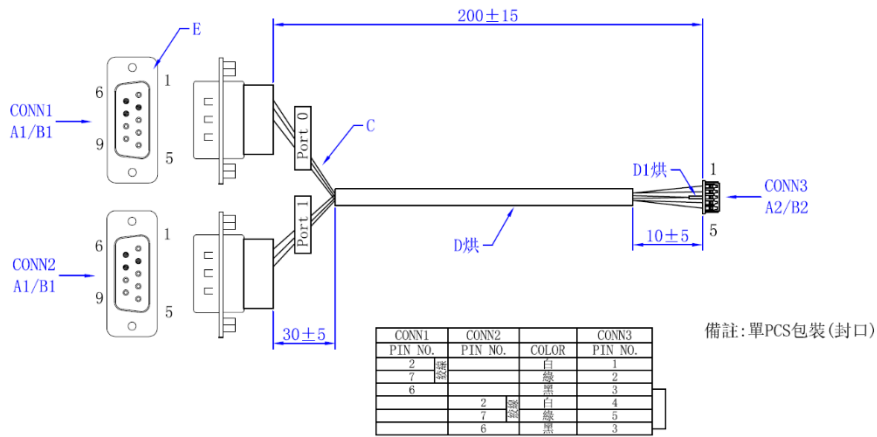
Optional Items

| Part Number | Description |
|-------------|---|
| T1700000008 | FARO/GADN CAN bus cable, Box Header 5P to DB9 Cable, 2 ch CAN, 200mm (CA0001) |
| T1700000009 | FARO/GADN CAN bus cable, Box Header 5P to 2 DB9 Y Cable, 2 ch CAN, 200mm (CA0003) |
| T1700000010 | FARO/GADN J1708 cable, Box Header 3P to DB9 Cable, 1 ch J1708, 200mm (CA0005) |

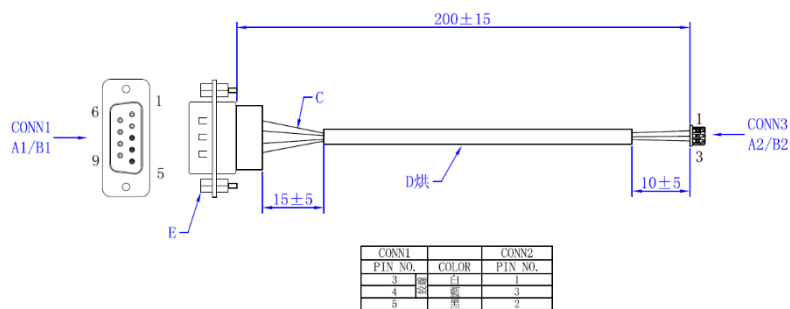
Cable: T170000008 : FARO/GADN CAN bus cable, Box Header 5P to DB9 Cable, 2 ch CAN, 200mm (CA0001)



Cable: T170000009 : FARO/GADN CAN bus cable, Box Header 5P to 2 DB9 Y Cable, 2 ch CAN, 200mm (CA0003)



Cable: T170000010 : FARO/GADN J1708 cable, Box Header 3P to DB9 Cable, 1 ch J1708, 200mm (CA0005)



ANTZER TECH CO., LTD.

Website : www.antzer-tech.com

Facebook : www.facebook.com/ANTZERTECH/

Tel : +886-2-7729-9223

Email : sales@antzer-tech.com

Office : 7F-7, No.237, Sec. 1, Datong Rd., Xizhi Dist., New Taipei City 221 Taiwan

